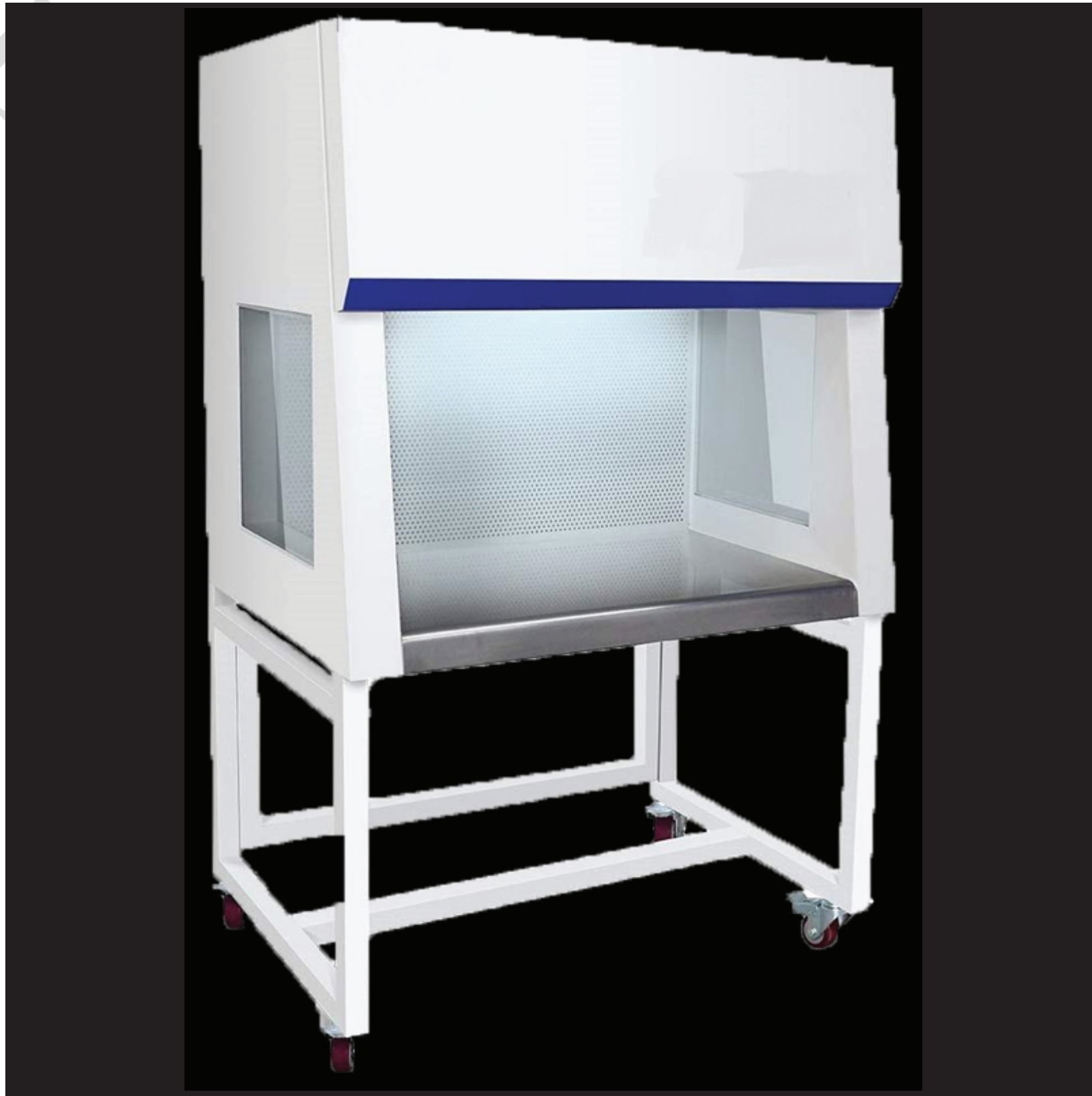






VERTICAL LAMINAR AIR FLOW (VLAF)

Vertical Laminar Air Flow cabinets are designed for creation of a bacterial dust free air space. The Work area is continuously supplied with positive pressure HEPA Filter flow the air vertically & prevents contamination from operator and environment to work area. Air Flow cabinets are used for work with low risk substance & materials



Vertical Laminar Air Flow
(VLAFF)



Description - VERTICAL LAMINAR AIR FLOW (VLAF) MOC SS304, 316, 316L	
HEPA Filter	Imported Minipleat HEPA Filter with hot melt technology which conforms to EU-14 Grade at supply position with an efficiency rating better than 99.997% for 0.3 micron
Pre - Filter	Pre-Filter are made from Non-Woven synthetic with HDPE mesh conforms to EU-06 Grade, with an efficiency rating better than 95% down to 5 micron
Pressure Gauge	Magnehelic Gauge (0-25mmwc: 1No.) to monitor pressure drop across HEPA Filter
Lighting	LED Light with Milky White Acrylic Sheet (250 Lux) at work surface
ON/OFF Switch	Keypad ON/OFF Switch Manual for Motor Blower, LED Light & UV Light
Switch Socket	6/15 Amp single - phase Switch Socket use for external equipment
Air Flow	Vertical
Control Pannel	Electrical Control Pannel mount in Built.



Description - VERTICAL LAMINAR AIR FLOW (VLAF) MOC SS304, 316, 316L	
PAO Port	PAO test port at upstream of HEPA Filter integrity test. (With PAO Solution)
Noise Level	Less than 75dB on scale 'A' when ambient is greater than 60dB on scale 'A'
Electrical Supply	230V AC 1-0 50 HZ/415V AC 3-0 50HZ
Vibration Level	Minimum
Work Table (SMVLF)	SS Work Table with due reinforcement
Side Panel (SMVLF)	Toughened Glass/ SS Sheet/ Acrylic Sheet Side Panel Screens for Maximum Visibility



Optional Accessories

1. U.V Light with Hour Meter. SS 304 Cock for Gas and Air.
2. Audio Visual Alarm indicating condition of HEPA Filters.
3. Clean down time with operation hold indicator.
4. VFD based control system.
5. Photohelic Gauge/ Digital Pressure Guage to monitor pressure drop across filter.
6. Sodium Vapour Lamps.
8. Anti Static PVC Curtains.
9. Suspension Rod option avilabl in MS and SS.
10. SS 304 Cock for Gas and Air.
11. Foldable Polycarbonate front hinged door.
12. Flame Proof fitting.



Documentation

All necessary documents will be provided as per the latest prevailing standards.

